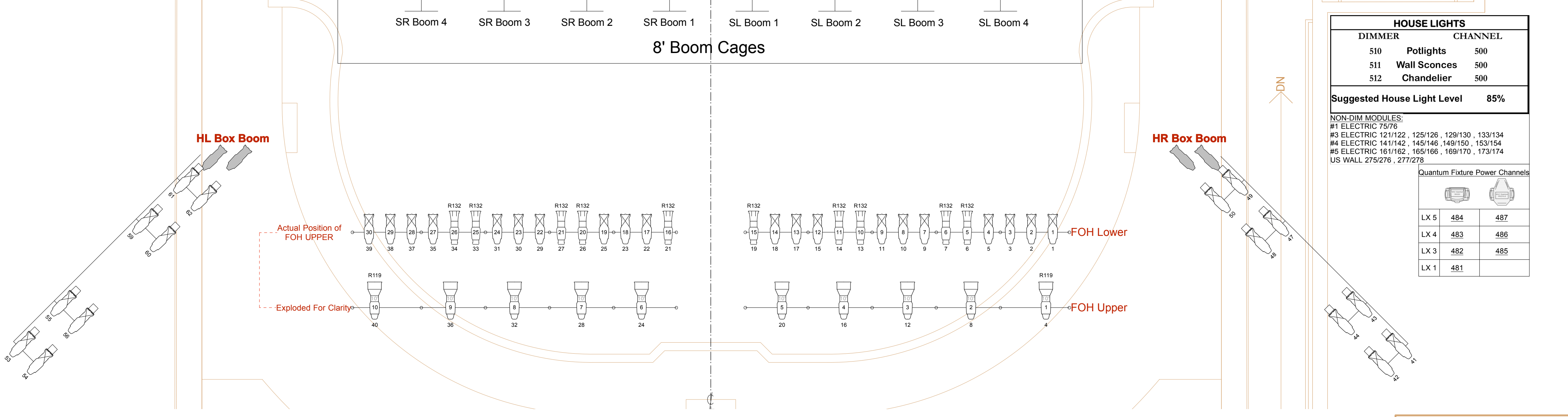
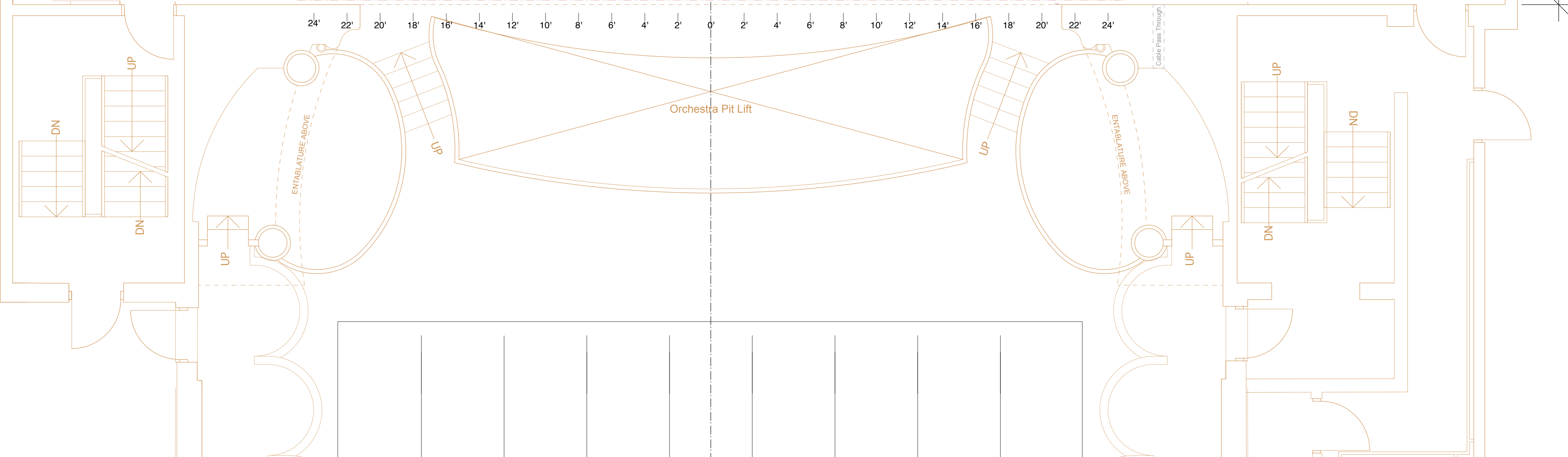


- Rigging Cabinet
- 51 CYCLORAMA
  - 50 FULL BLACK
  - 49
  - 48
  - 47 SCRIM STORAGE
  - 46
  - 45
  - 44 LX #6 (+30'-0")
  - 43
  - 42 LEGS #5
  - 41 BORDER #5 (+23'-0")
  - 40 BLACK SCRIM
  - 39 FULL BLACK
  - 38
  - 37 LX#5A (+28'-0")
  - 36
  - 35
  - 34
  - 33 LX #5 (+26'-6")
  - 32 LEGS #4
  - 31 BORDER #4 (+23'-0")
  - 30
  - 29
  - 28
  - 27 US UPA MONITORS
  - 26 BLACK TRAVELLER
  - 25 SPARE BORDER
  - 24
  - 23
  - 22 LX #4 (+26'-9")
  - 21 LEGS #3
  - 20 BORDER #3 (+23'-0")
  - 19
  - 18
  - 17
  - 16
  - 15
  - 14
  - 13 LX #3 (+27'-0")
  - 12 LEGS #2
  - 11 BORDER #2 (+23'-0")
  - 10 PROJECTION SCREEN
  - 09
  - 08
  - 07 LX #2 (+29'-6")
  - 06 DS UPA MONITORS
  - 05
  - 04 LX #1 (+27'-0")
  - 03 LEGS #1
  - 02 HOUSE CURTAIN
  - 01 PAINTED VALANCE (+21'-0")



HOUSE LIGHTS		
DIMMER	Potlights	CHANNEL
510	Potlights	500
511	Wall Sconces	500
512	Chandelier	500
Suggested House Light Level		85%

NON-DIM MODULES:  
 #1 ELECTRIC 75/76  
 #3 ELECTRIC 121/122, 125/126, 129/130, 133/134  
 #4 ELECTRIC 141/142, 145/146, 149/150, 153/154  
 #5 ELECTRIC 161/162, 165/166, 169/170, 173/174  
 US WALL 275/276, 277/278

Quantum Fixture Power Channels		
Fixture	Channel	Channel
LX 5	484	487
LX 4	483	486
LX 3	482	485
LX 1	481	